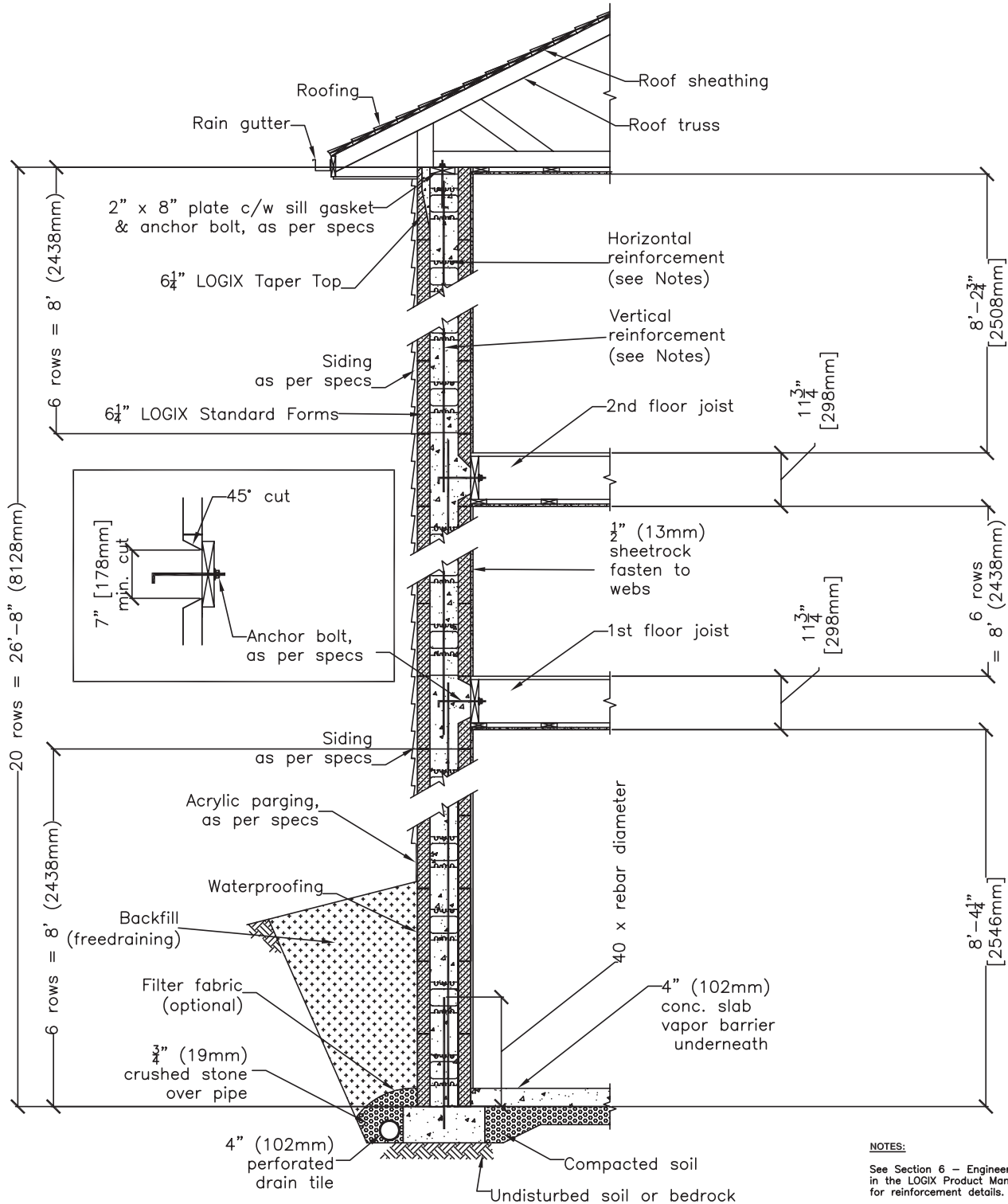
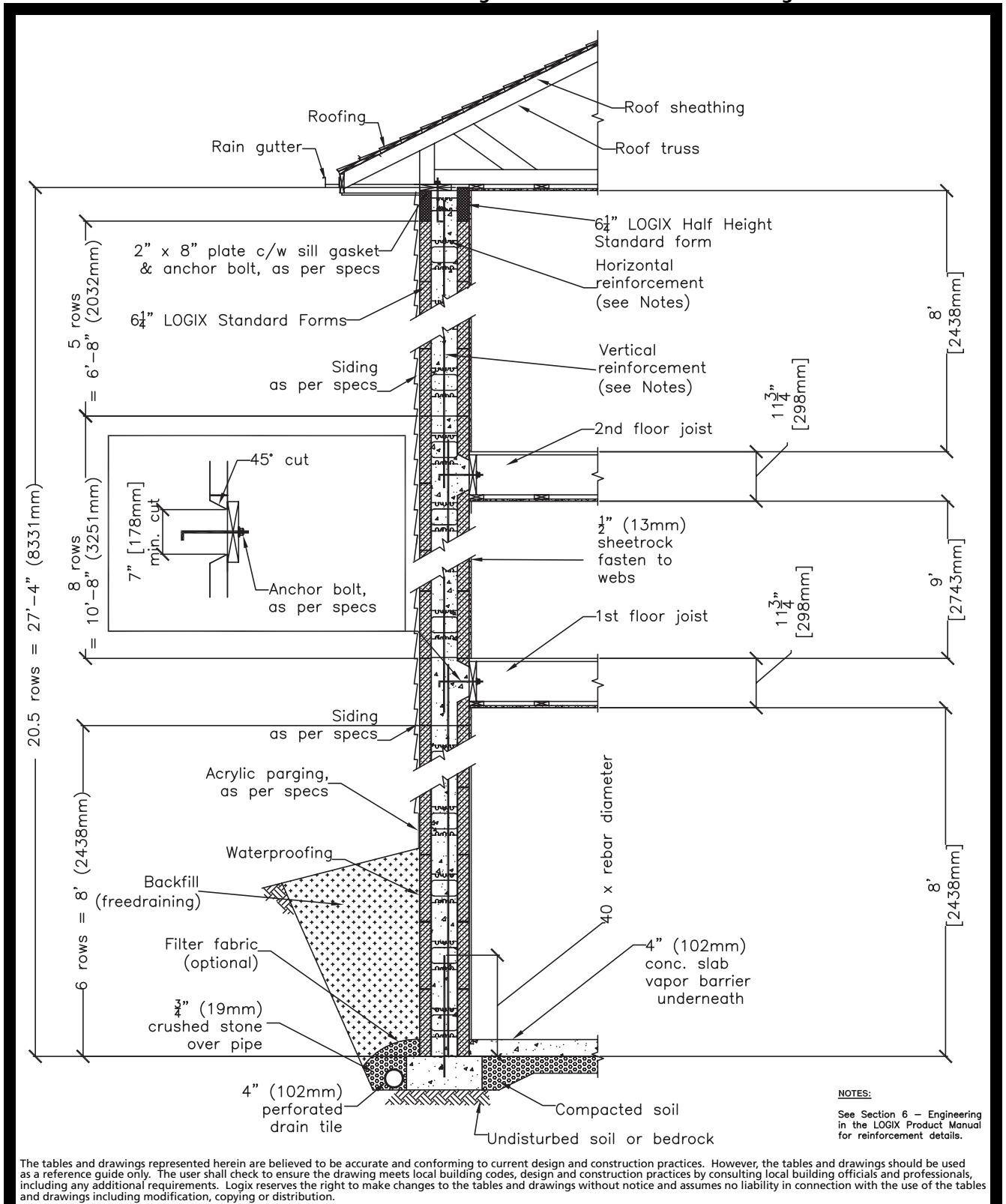


5.7 - TWO STOREY CONSTRUCTION



The tables and drawings represented herein are believed to be accurate and conforming to current design and construction practices. However, the tables and drawings should be used as a reference guide only. The user shall check to ensure the drawing meets local building codes, design and construction practices by consulting local building officials and professionals, including any additional requirements. Logix reserves the right to make changes to the tables and drawings without notice and assumes no liability in connection with the use of the tables and drawings including modification, copying or distribution.

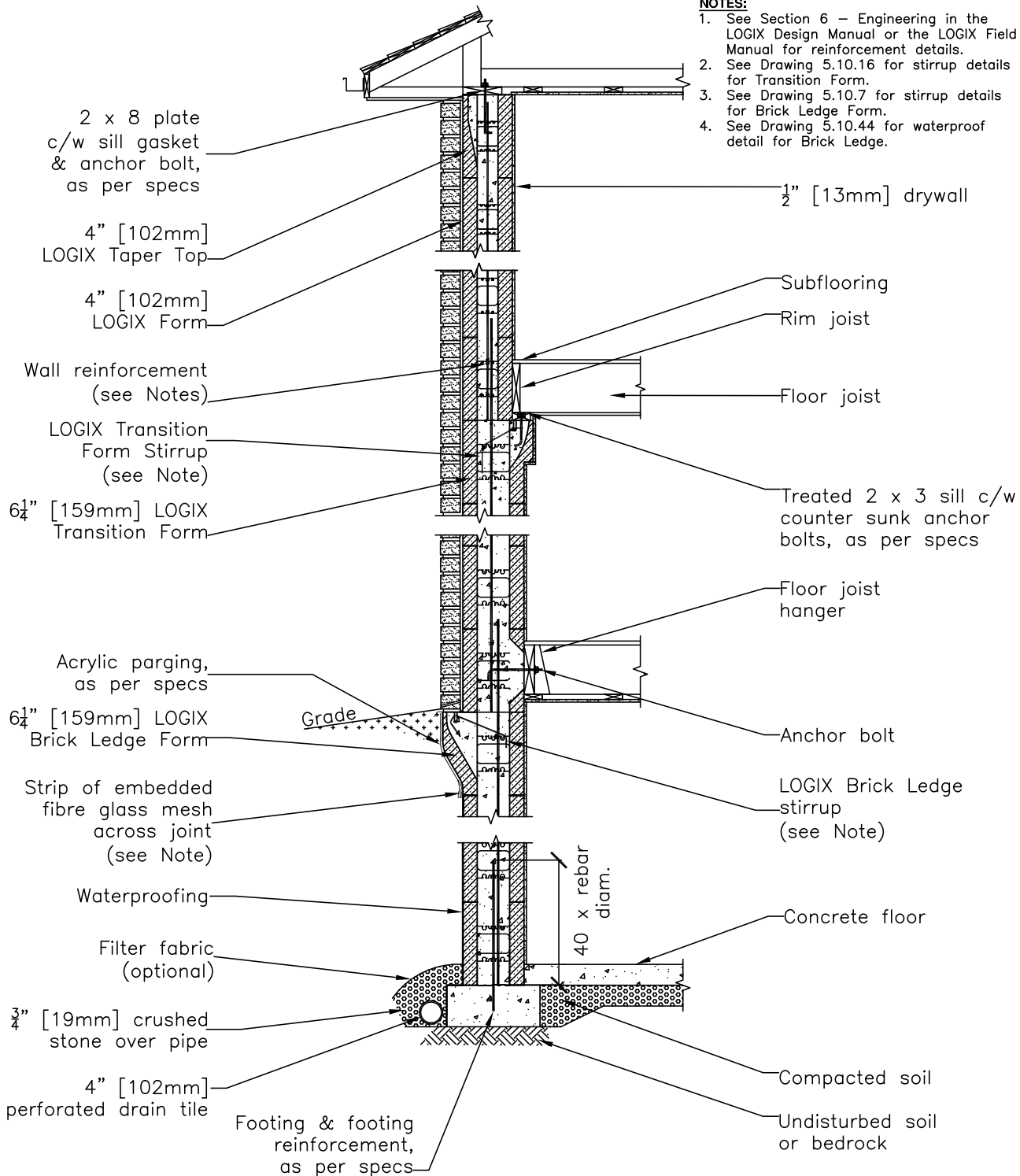
All drawings are downloadable at www.logixcf.com

All drawings are downloadable at www.logixcf.com

CAD DRAWINGS

NOTES:

1. See Section 6 – Engineering in the LOGIX Design Manual or the LOGIX Field Manual for reinforcement details.
2. See Drawing 5.10.16 for stirrup details for Transition Form.
3. See Drawing 5.10.7 for stirrup details for Brick Ledge Form.
4. See Drawing 5.10.44 for waterproof detail for Brick Ledge.



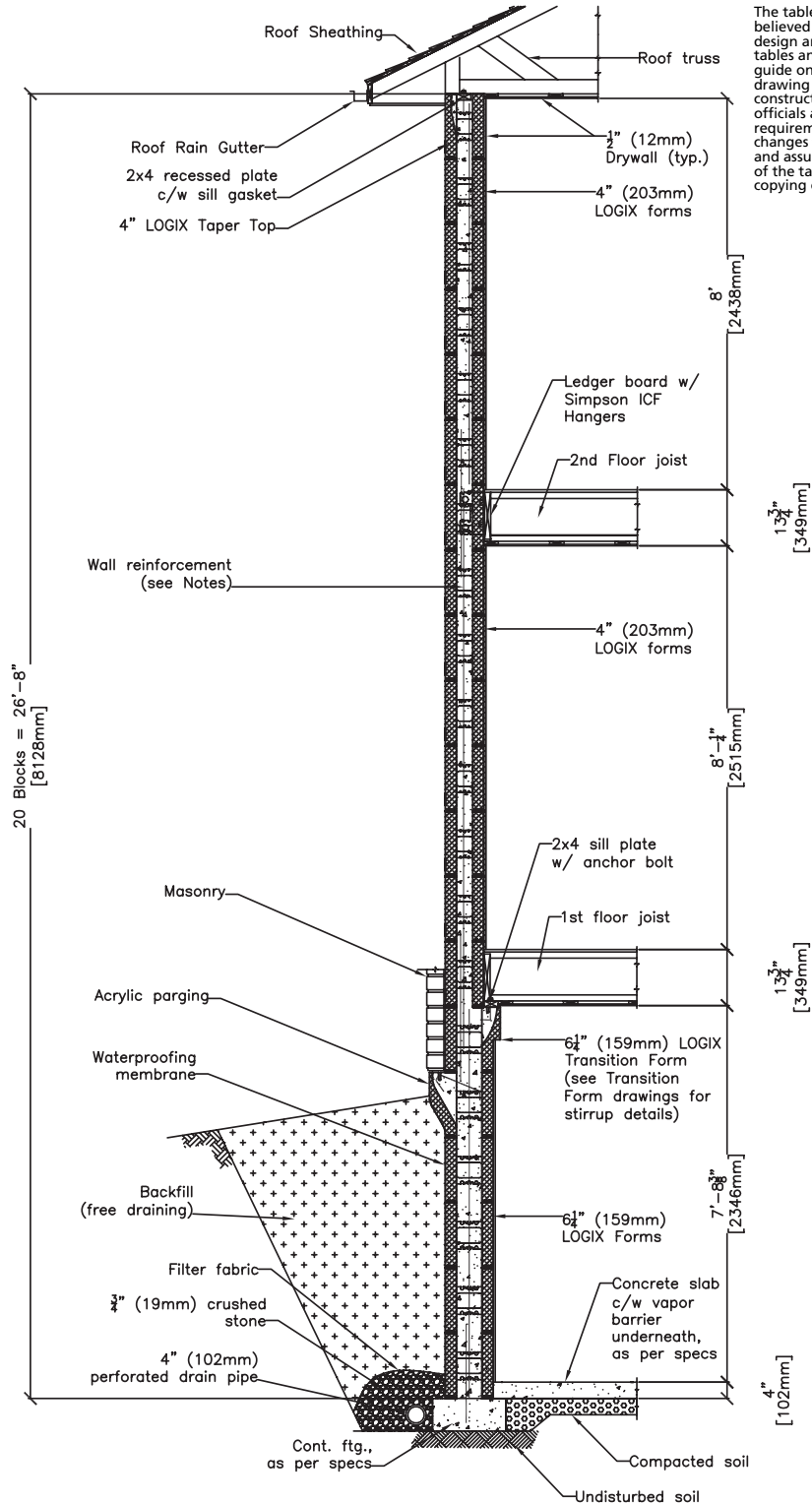
The tables and drawings represented herein are believed to be accurate and conforming to current design and construction practices. However, the tables and drawings should be used as a reference guide only. The user shall check to ensure the drawing meets local building codes, design and construction practices by consulting local building officials and professionals, including any additional requirements. Logix reserves the right to make changes to the tables and drawings without notice and assumes no liability in connection with the use of the tables and drawings including modification, copying or distribution.

www.logixcf.com

Think With Logix™

5 - 180

LOGIX®
 INSULATED CONCRETE FORMS

All drawings are downloadable at www.logixicf.com

The tables and drawings represented herein are believed to be accurate and conforming to current design and construction practices. However, the tables and drawings should be used as a reference guide only. The user shall check to ensure the drawing meets local building codes, design and construction practices by consulting local building officials and professionals, including any additional requirements. Logix reserves the right to make changes to the tables and drawings without notice and assumes no liability in connection with the use of the tables and drawings including modification, copying or distribution.

NOTES:

See Section 6 - Engineering
in the LOGIX Product Manual
for reinforcement details.

C A D D R A W I N G S

www.logixicf.com

Think With Logix™

5 - 1 8 1

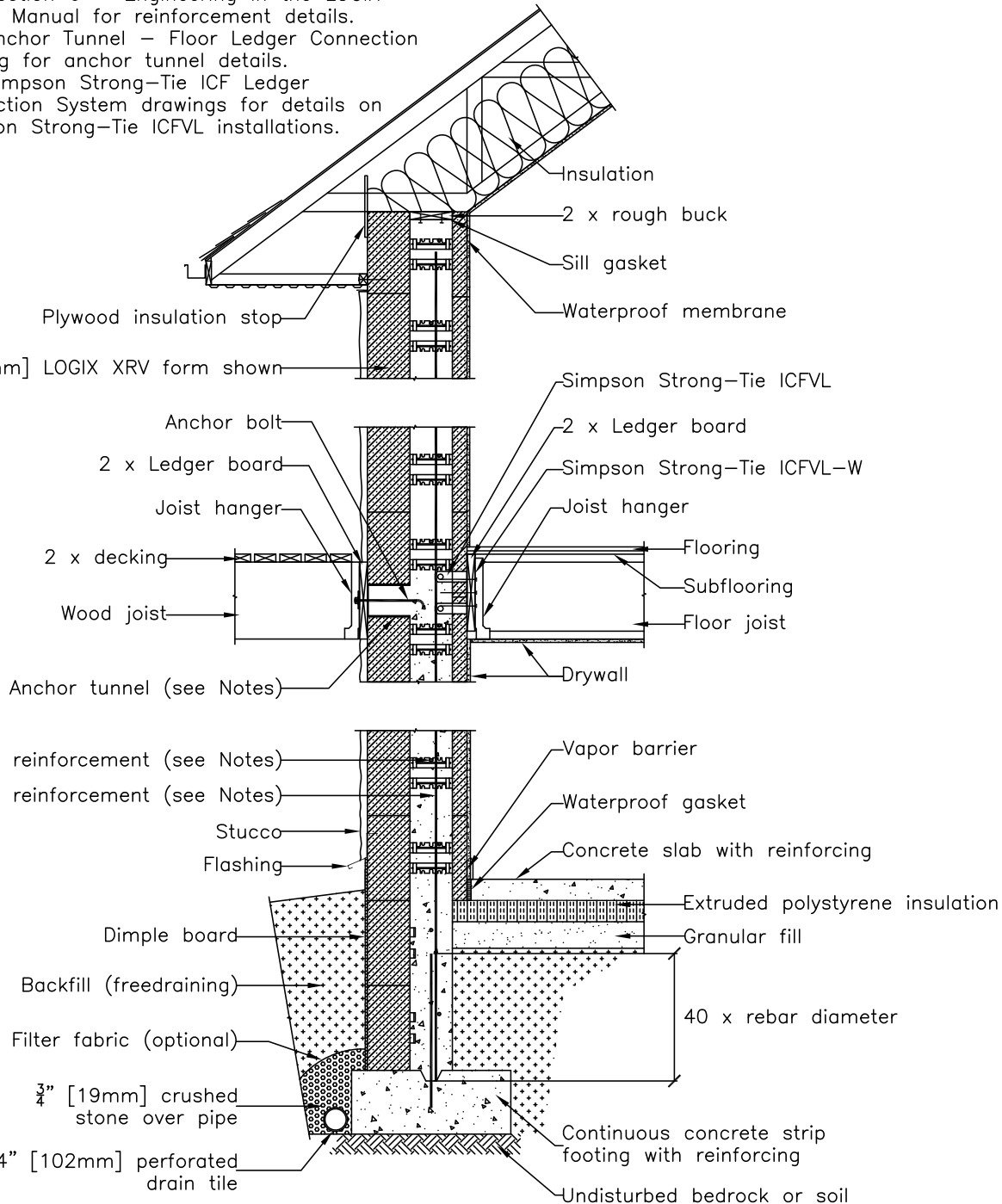
LOGIX®
INSULATED CONCRETE FORMS

RESIDENTIAL DRAWINGS 5.7.5 - TWO STOREY WALL SECTION WITH LOGIX XRV

All drawings are downloadable at www.logixcf.com

NOTE:

1. See Section 6 – Engineering in the LOGIX Design Manual for reinforcement details.
2. See Anchor Tunnel – Floor Ledger Connection drawing for anchor tunnel details.
3. See Simpson Strong-Tie ICF Ledger Connection System drawings for details on Simpson Strong-Tie ICFVL installations.



The tables and drawings represented herein are believed to be accurate and conforming to current design and construction practices. However, the tables and drawings should be used as a reference guide only. The user shall check to ensure the drawing meets local building codes, design and construction practices by consulting local building officials and professionals, including any additional requirements. Logix reserves the right to make changes to the tables and drawings without notice and assumes no liability in connection with the use of the tables and drawings including modification, copying or distribution.

www.logixcf.com

Think With Logix™

5 - 182

LOGIX®
INSULATED CONCRETE FORMS