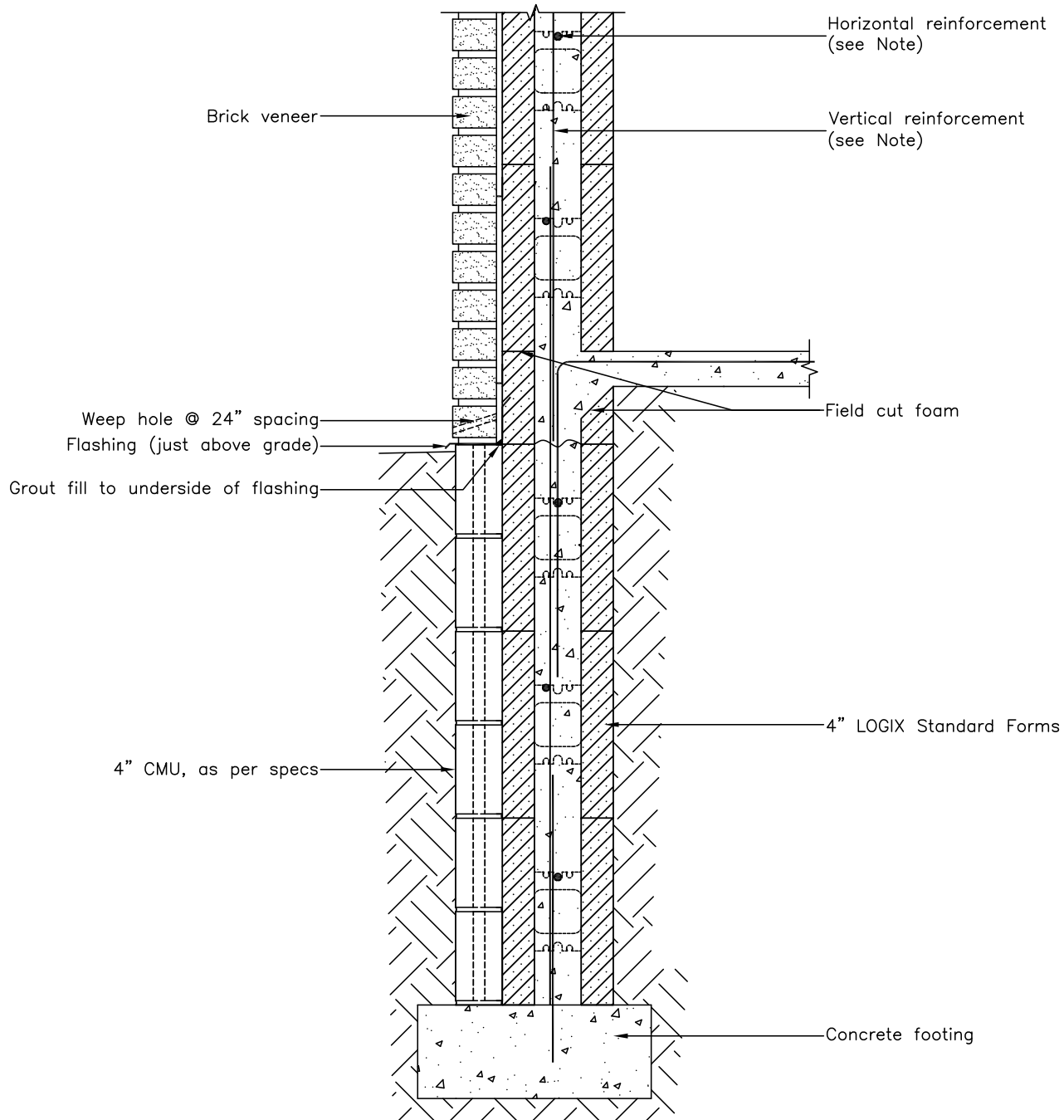


## **5.3 - FOUNDATION DETAILS**

5.3.1 - LOGIX WALL WITH CMU BRICK  
LEDGEAll drawings are downloadable at [www.logixcf.com](http://www.logixcf.com)

C A D D R A W I N G S

**NOTES:**

See Section 6 – Engineering in the LOGIX Product Manual for reinforcement details.

The tables and drawings represented herein are believed to be accurate and conforming to current design and construction practices. However, the tables and drawings should be used as a reference guide only. The user shall check to ensure the drawing meets local building codes, design and construction practices by consulting local building officials and professionals, including any additional requirements. Logix reserves the right to make changes to the tables and drawings without notice and assumes no liability in connection with the use of the tables and drawings including modification, copying or distribution.

[www.logixcf.com](http://www.logixcf.com)

Think With Logix™

5 – 10

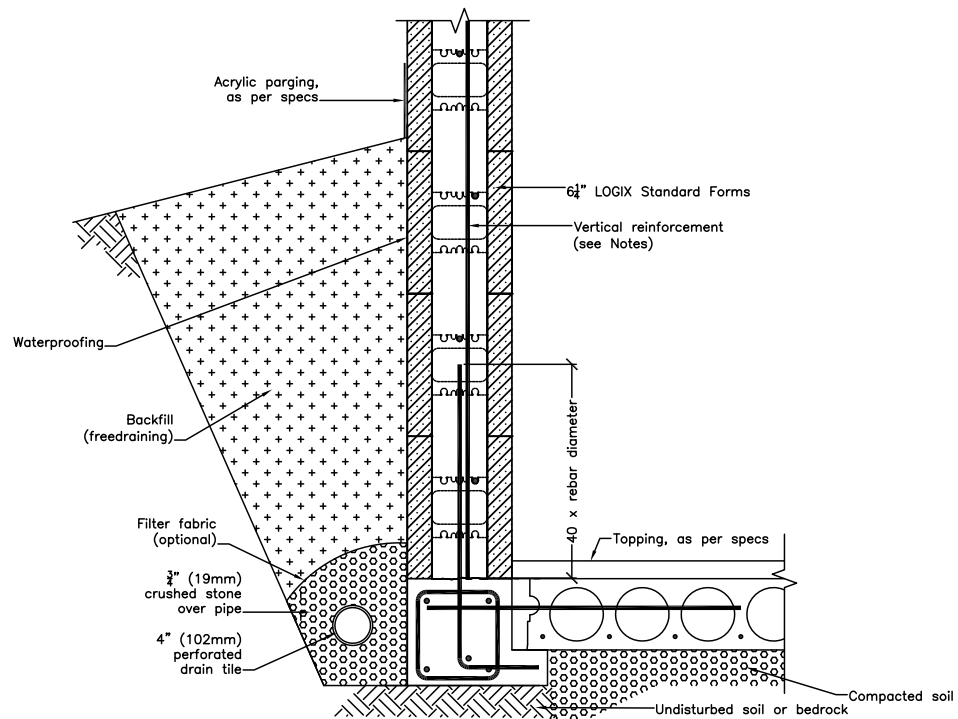
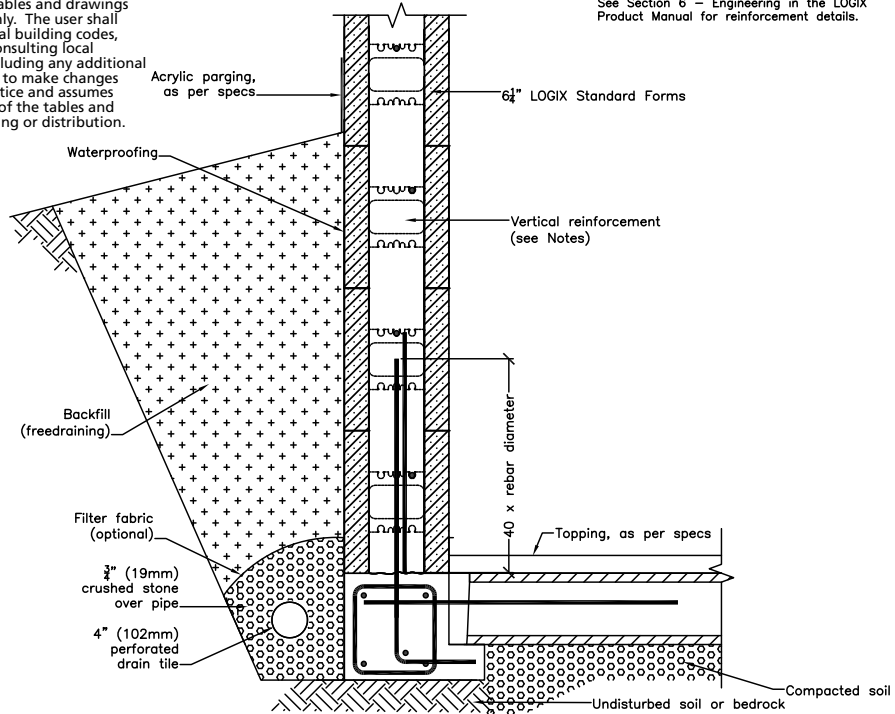
**LOGIX®**  
 INSULATED CONCRETE FORMS

All drawings are downloadable at [www.logixicf.com](http://www.logixicf.com)

The tables and drawings represented herein are believed to be accurate and conforming to current design and construction practices. However, the tables and drawings should be used as a reference guide only. The user shall check to ensure the drawing meets local building codes, design and construction practices by consulting local building officials and professionals, including any additional requirements. Logix reserves the right to make changes to the tables and drawings without notice and assumes no liability in connection with the use of the tables and drawings including modification, copying or distribution.

**NOTES:**

See Section 6 – Engineering in the LOGIX Product Manual for reinforcement details.

[www.logixicf.com](http://www.logixicf.com)

Think With Logix™

5-11

**LOGIX®**  
 INSULATED CONCRETE FORMS

All drawings are downloadable at [www.logixcf.com](http://www.logixcf.com)

The tables and drawings represented herein are believed to be accurate and conforming to current design and construction practices. However, the tables and drawings should be used as a reference guide only. The user shall check to ensure the drawing meets local building codes, design and construction practices by consulting local building officials and professionals, including any additional requirements. Logix reserves the right to make changes to the tables and drawings without notice and assumes no liability in connection with the use of the tables and drawings including modification, copying or distribution.

LOGIX Standard Form  
(6 $\frac{1}{4}$ " [159mm] shown)

Rigid foam insulation

Concrete grade beam

Rigid insulation under slab.

Void form u/s concrete grade  
beam between piles

Concrete pile

**NOTES:**

See Section 6 – Engineering in the  
LOGIX Design Manual or the LOGIX  
Field Manual for reinforcement details.

C A D D R A W I N G S

[www.logixcf.com](http://www.logixcf.com)

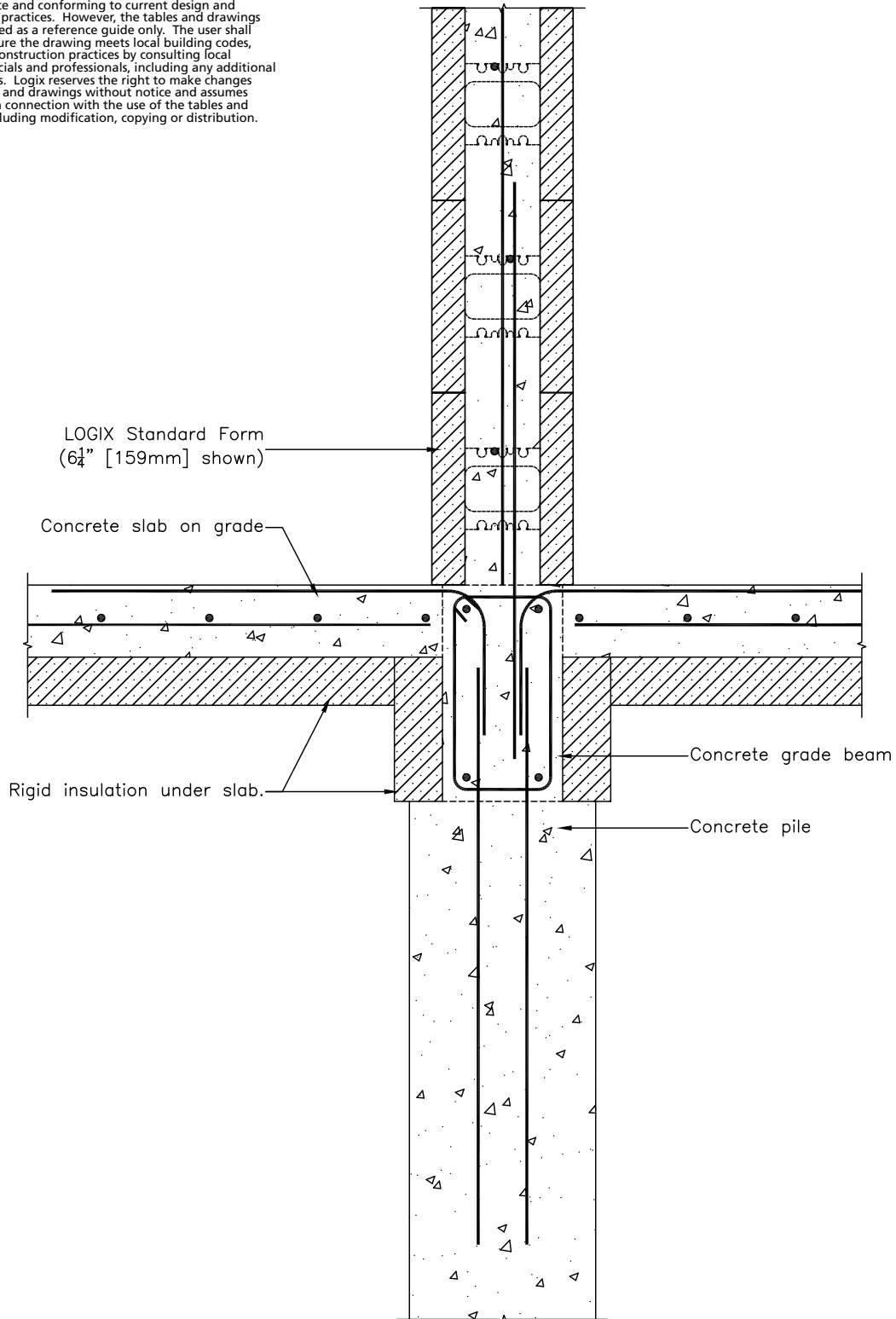
Think With Logix™

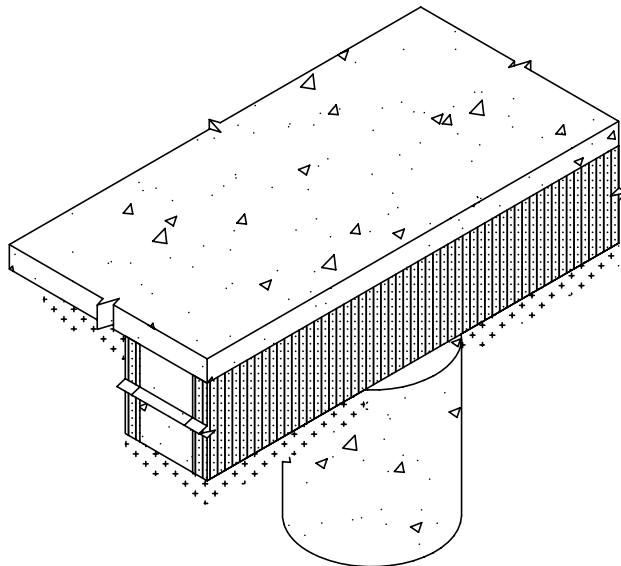
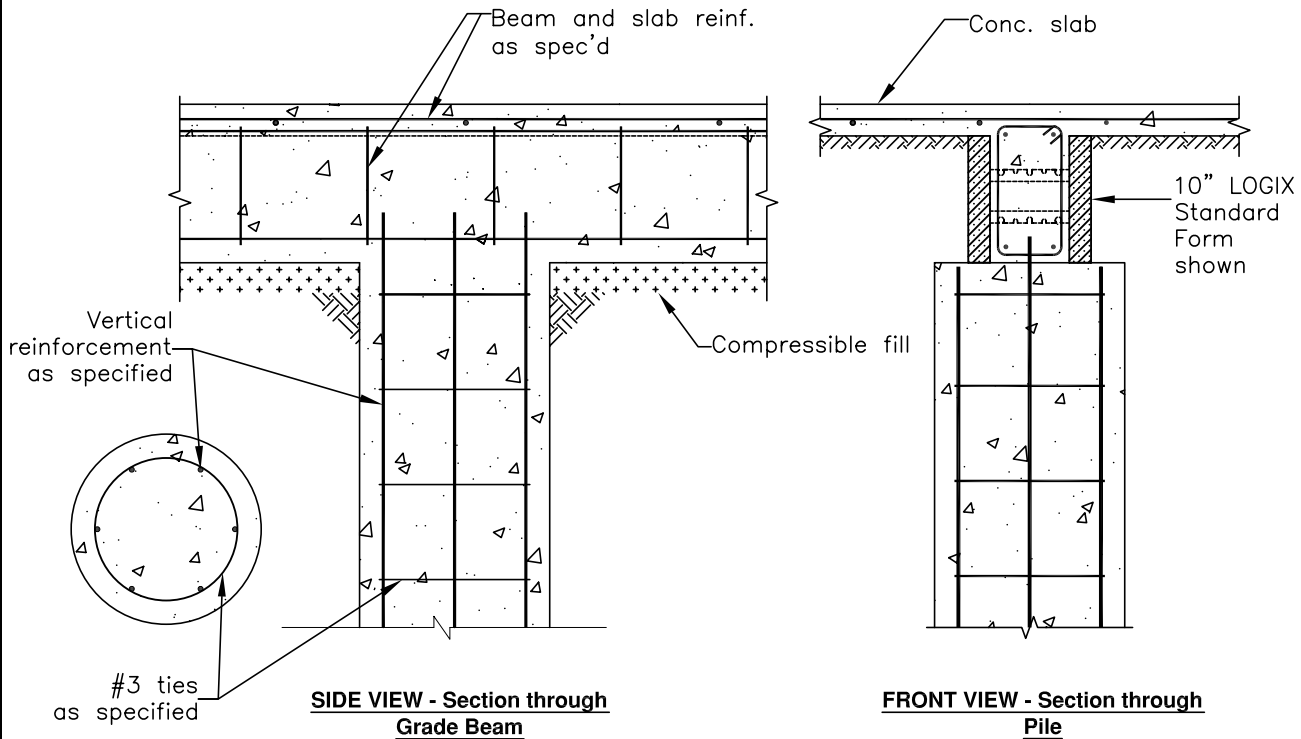
5 - 12

**LOGIX®**  
INSULATED CONCRETE FORMS

All drawings are downloadable at [www.logixicf.com](http://www.logixicf.com)

The tables and drawings represented herein are believed to be accurate and conforming to current design and construction practices. However, the tables and drawings should be used as a reference guide only. The user shall check to ensure the drawing meets local building codes, design and construction practices by consulting local building officials and professionals, including any additional requirements. Logix reserves the right to make changes to the tables and drawings without notice and assumes no liability in connection with the use of the tables and drawings including modification, copying or distribution.



All drawings are downloadable at [www.logixicf.com](http://www.logixicf.com)

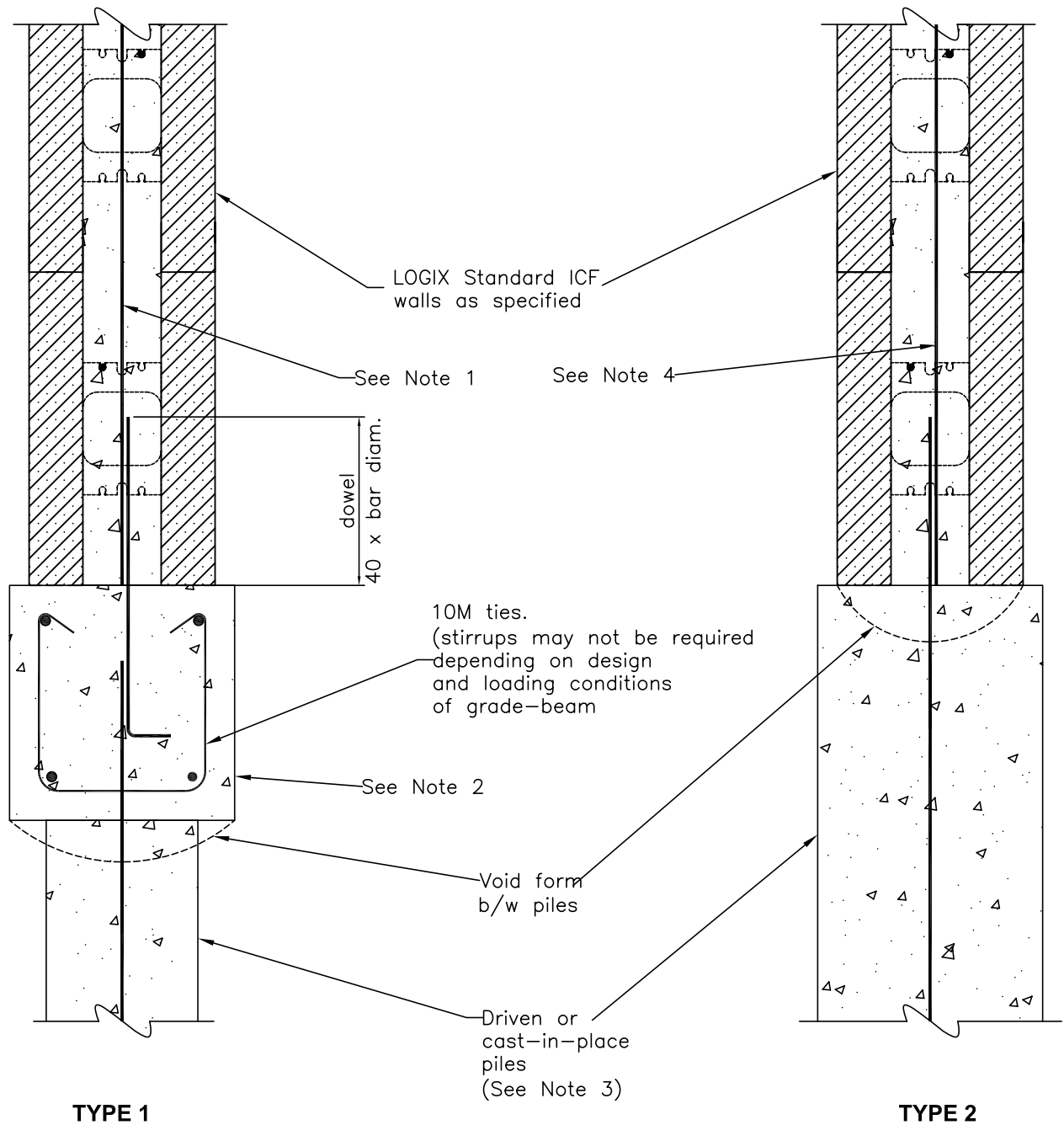
The tables and drawings represented herein are believed to be accurate and conforming to current design and construction practices. However, the tables and drawings should be used as a reference guide only. The user shall check to ensure the drawing meets local building codes, design and construction practices by consulting local building officials and professionals, including any additional requirements. Logix reserves the right to make changes to the tables and drawings without notice and assumes no liability in connection with the use of the tables and drawings including modification, copying or distribution.

[www.logixicf.com](http://www.logixicf.com)

Think With Logix™

5 - 14

**LOGIX®**  
 INSULATED CONCRETE FORMS

All drawings are downloadable at [www.logixicf.com](http://www.logixicf.com)**TYPE 1****TYPE 2****NOTES:**

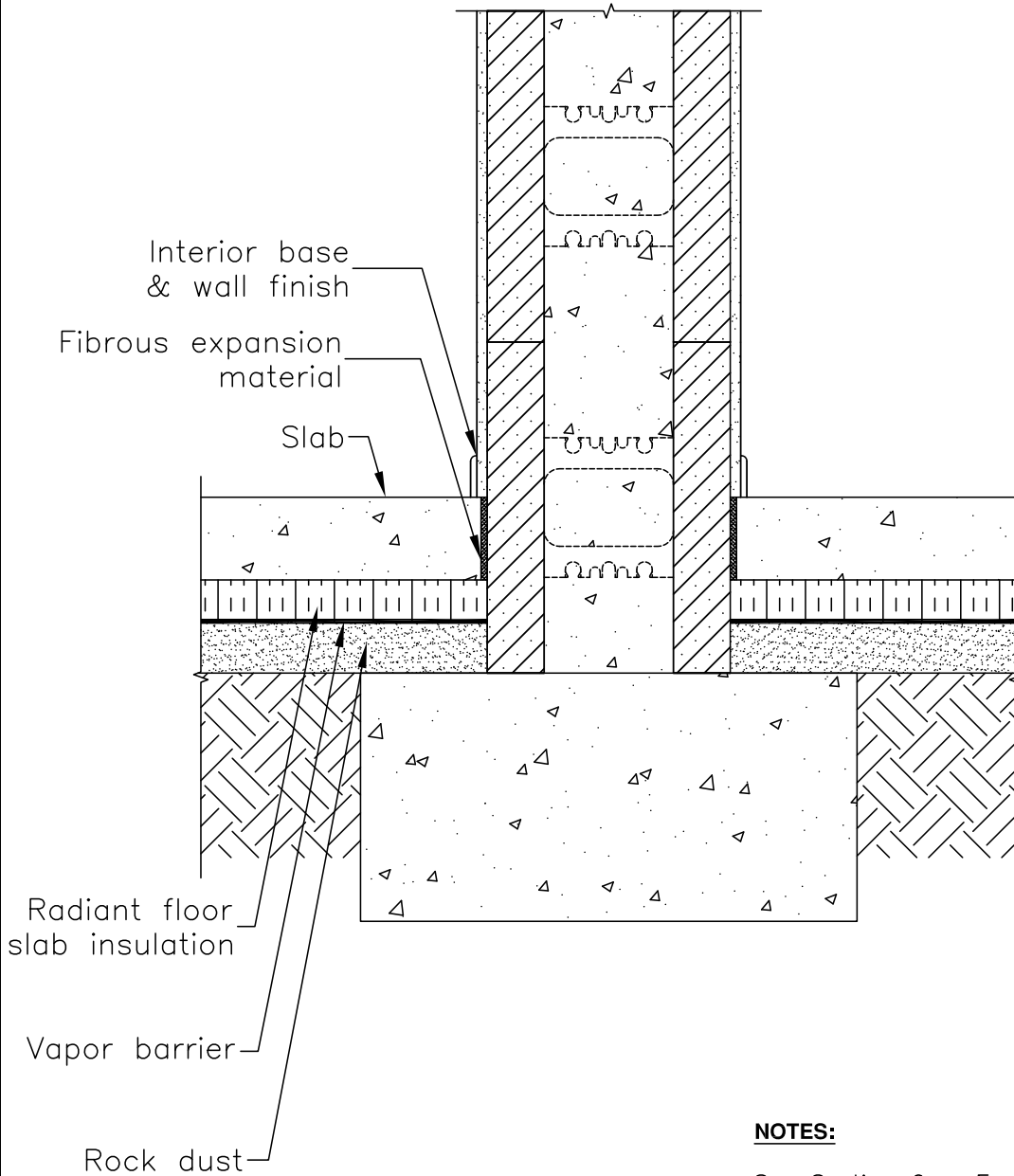
1. Refer to Section 6 of Logix Product Manual for additional information on vertical reinforcement for above- and below-grade walls.
2. Size and reinforcement for grade-beam to be designed as site specific.
3. Size, spacing and reinforcing for piles to be designed as site specific.
4. Reinforcing in wall to be designed as site specific.

The tables and drawings represented herein are believed to be accurate and conforming to current design and construction practices. However, the tables and drawings should be used as a reference guide only. The user shall check to ensure the drawing meets local building codes, design and construction practices by consulting local building officials and professionals, including any additional requirements. Logix reserves the right to make changes to the tables and drawings without notice and assumes no liability in connection with the use of the tables and drawings including modification, copying or distribution.

[www.logixicf.com](http://www.logixicf.com)**Think With Logix™****5-15**
**LOGIX®**  
 INSULATED CONCRETE FORMS

All drawings are downloadable at [www.logixicf.com](http://www.logixicf.com)

C A D D R A W I N G S

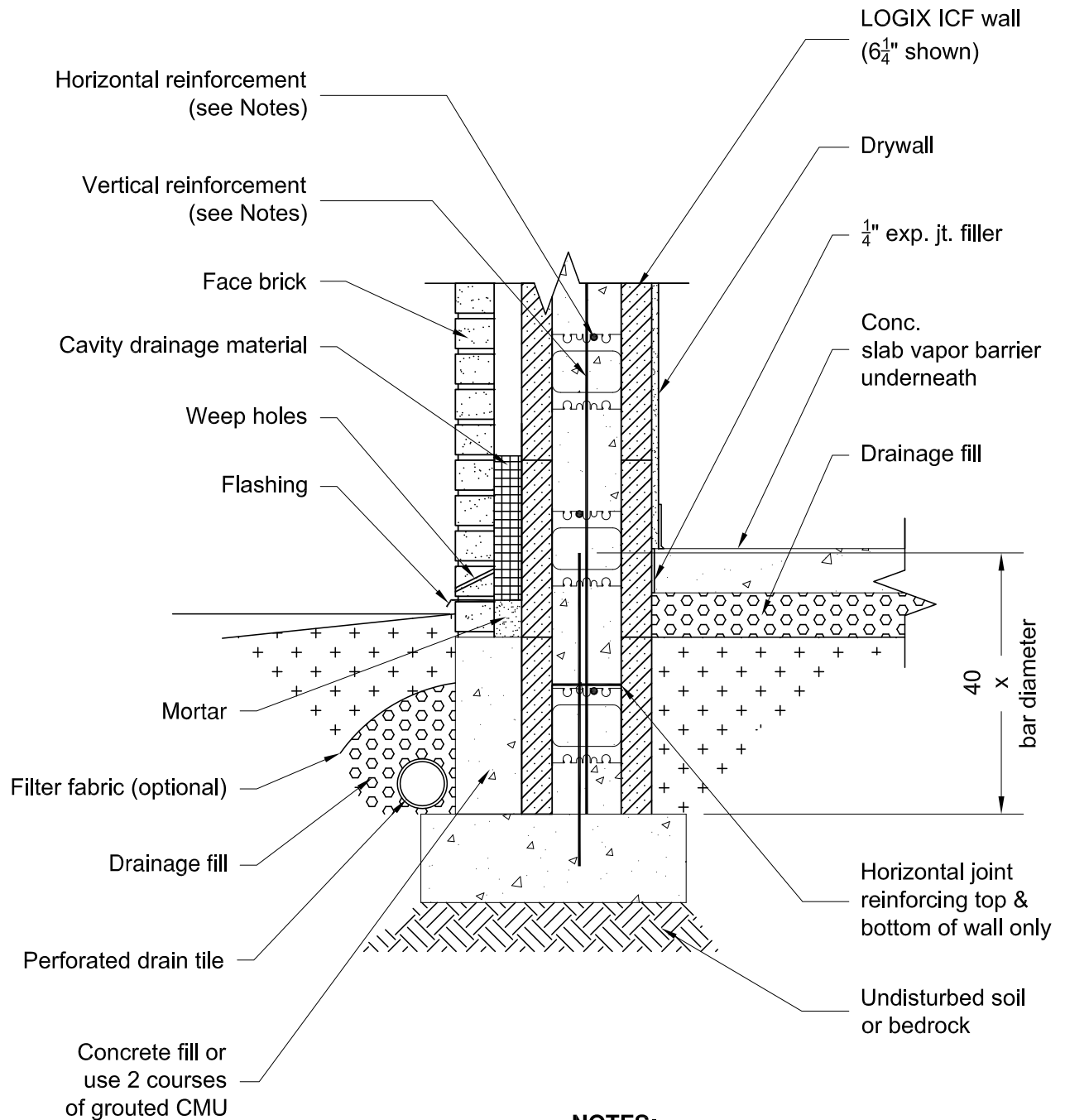
**NOTES:**

See Section 6 – Engineering in the LOGIX Design Manual or the LOGIX Field Manual for reinforcement details.

The tables and drawings represented herein are believed to be accurate and conforming to current design and construction practices. However, the tables and drawings should be used as a reference guide only. The user shall check to ensure the drawing meets local building codes, design and construction practices by consulting local building officials and professionals, including any additional requirements. Logix reserves the right to make changes to the tables and drawings without notice and assumes no liability in connection with the use of the tables and drawings including modification, copying or distribution.

[www.logixicf.com](http://www.logixicf.com)**Think With Logix™****5 – 16**
**LOGIX®**  
 INSULATED CONCRETE FORMS



All drawings are downloadable at [www.logixicf.com](http://www.logixicf.com)**NOTES:**

1. See Section 6 - Engineering in the LOGIX Design Manual for reinforcement details.

The tables and drawings represented herein are believed to be accurate and conforming to current design and construction practices. However, the tables and drawings should be used as a reference guide only. The user shall check to ensure the drawing meets local building codes, design and construction practices by consulting local building officials and professionals, including any additional requirements. Logix reserves the right to make changes to the tables and drawings without notice and assumes no liability in connection with the use of the tables and drawings including modification, copying or distribution.

[www.logixicf.com](http://www.logixicf.com)

Think With Logix™

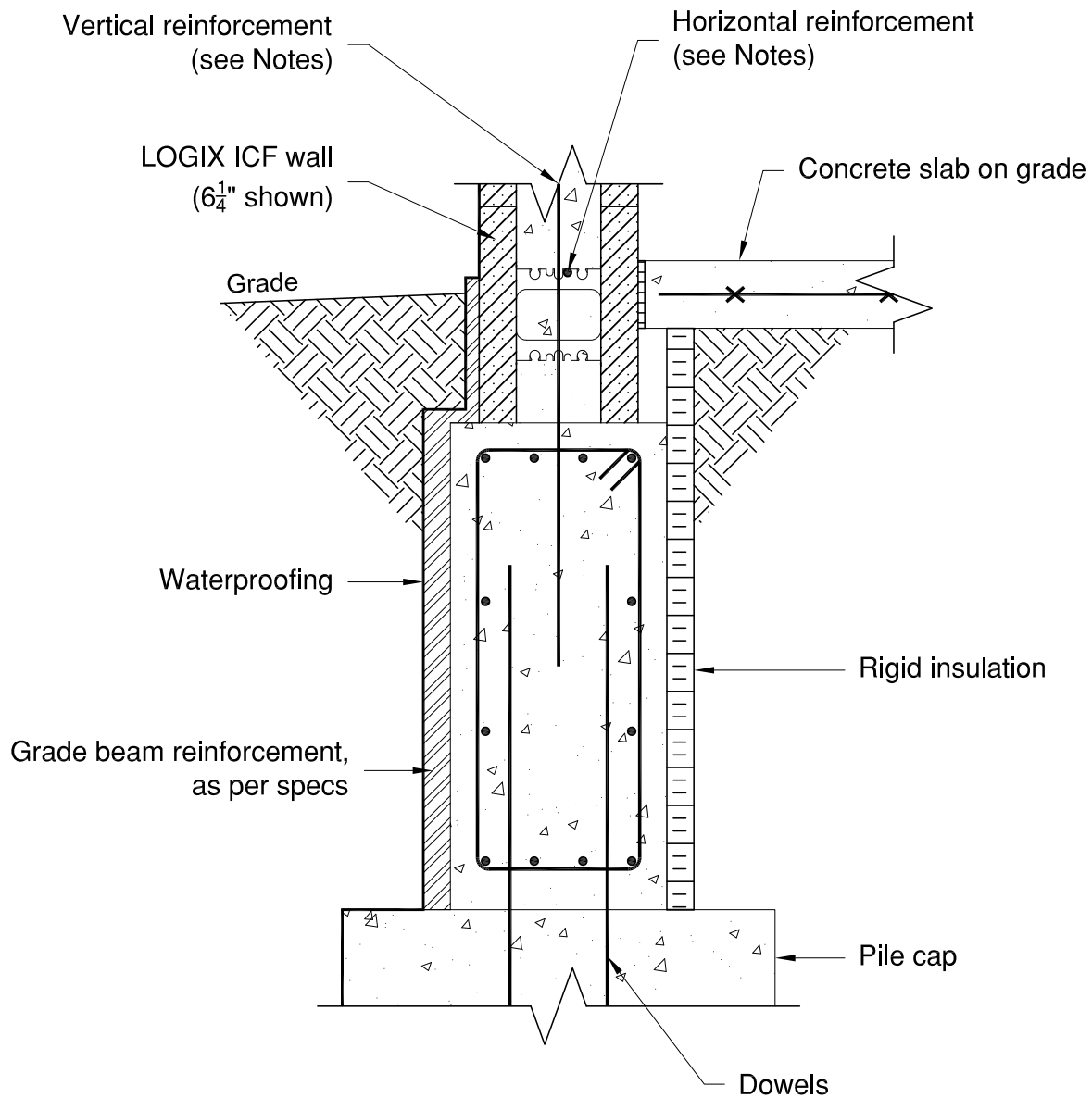
5 - 17

**LOGIX®**  
 INSULATED CONCRETE FORMS

Reprinted 2014

Rev. Jul 30/13

C A D D R A W I N G S

All drawings are downloadable at [www.logixicf.com](http://www.logixicf.com)**NOTES:**

1. See Section 6 - Engineering in the LOGIX Design Manual for reinforcement details.

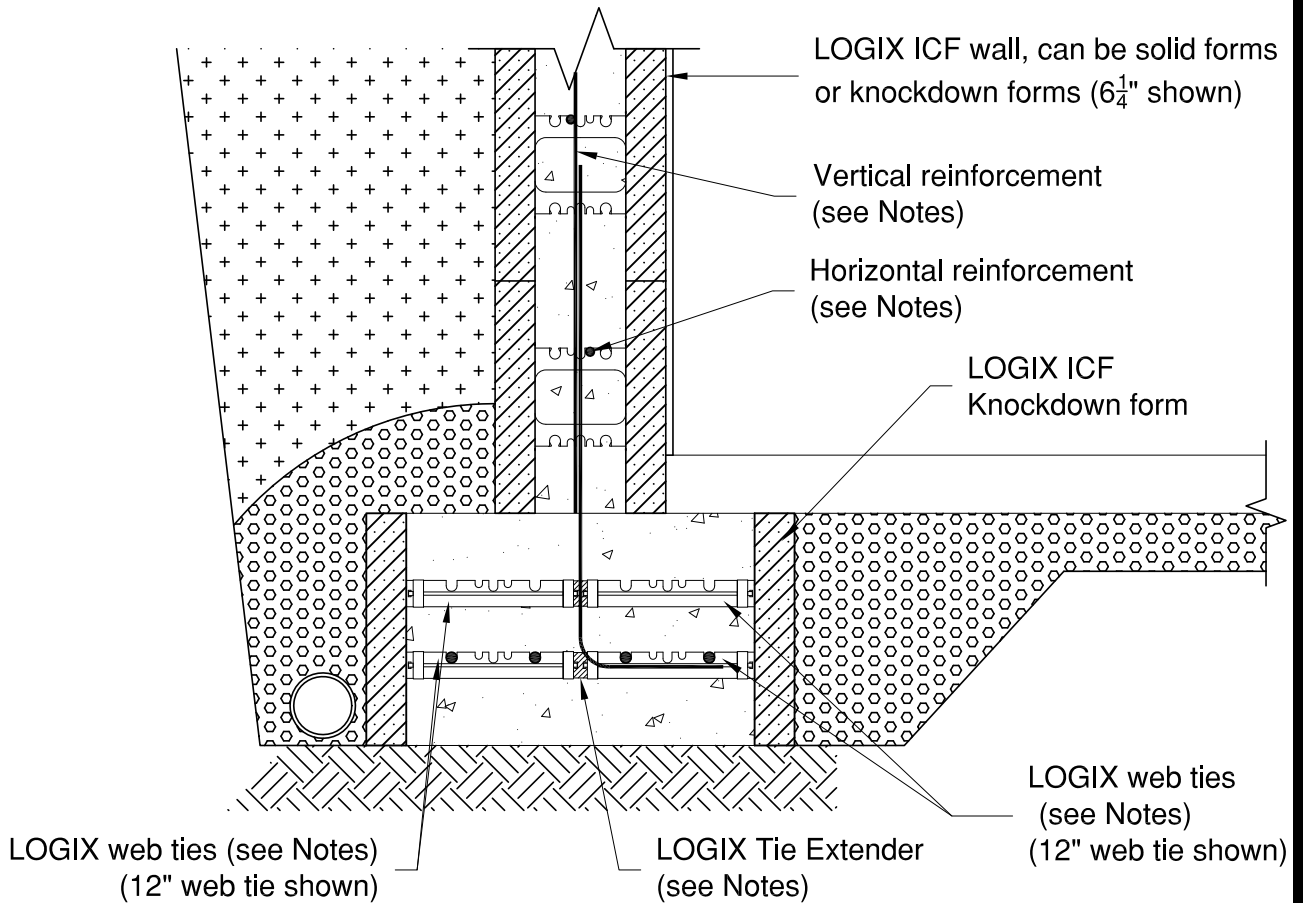
The tables and drawings represented herein are believed to be accurate and conforming to current design and construction practices. However, the tables and drawings should be used as a reference guide only. The user shall check to ensure the drawing meets local building codes, design and construction practices by consulting local building officials and professionals, including any additional requirements. Logix reserves the right to make changes to the tables and drawings without notice and assumes no liability in connection with the use of the tables and drawings including modification, copying or distribution.

[www.logixicf.com](http://www.logixicf.com)

Think With Logix™

5 - 18

**LOGIX®**  
 INSULATED CONCRETE FORMS

All drawings are downloadable at [www.logixicf.com](http://www.logixicf.com)**NOTES:**

1. See Section 6 - Engineering in the LOGIX Design Manual for reinforcement details.
2. For more information on LOGIX Tie Extenders, see Drawing 5.1.22..

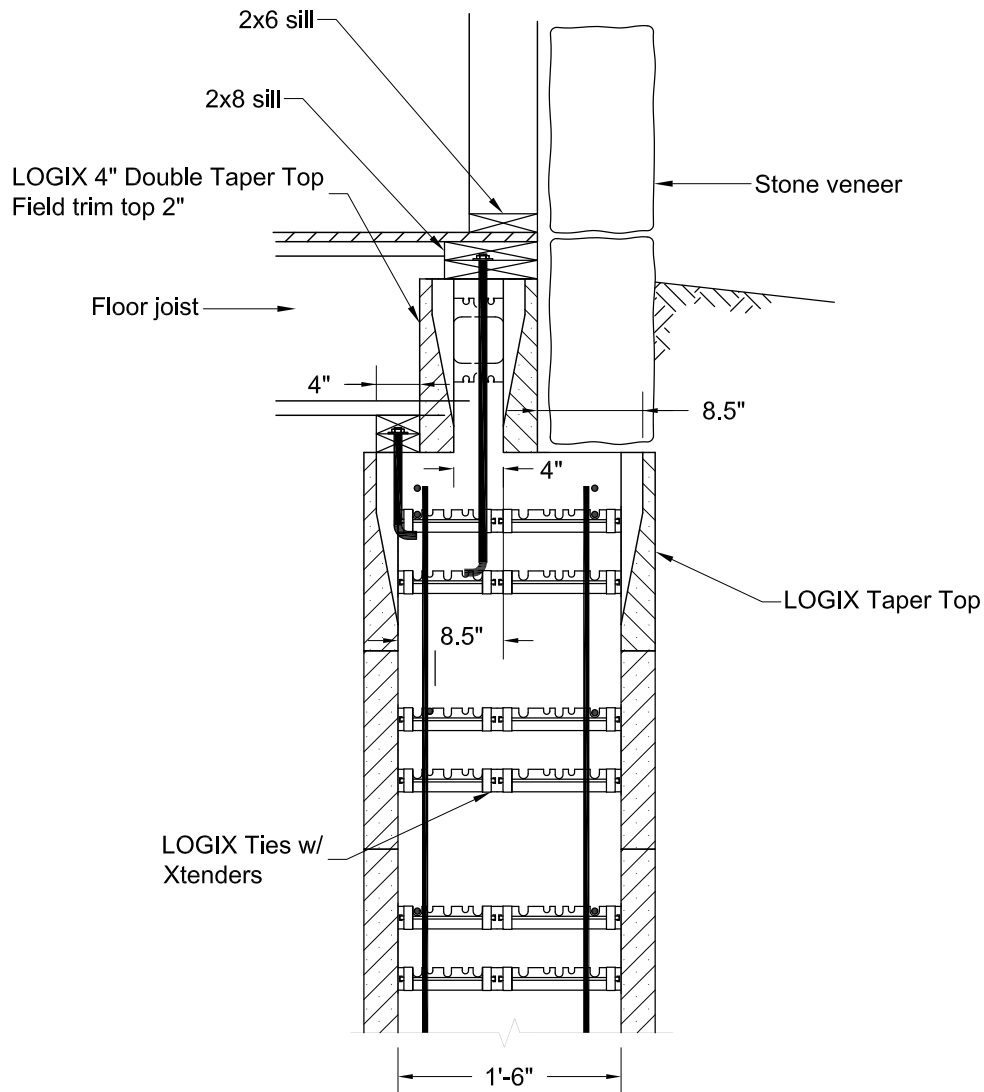
The tables and drawings represented herein are believed to be accurate and conforming to current design and construction practices. However, the tables and drawings should be used as a reference guide only. The user shall check to ensure the drawing meets local building codes, design and construction practices by consulting local building officials and professionals, including any additional requirements. Logix reserves the right to make changes to the tables and drawings without notice and assumes no liability in connection with the use of the tables and drawings including modification, copying or distribution.

[www.logixicf.com](http://www.logixicf.com)

Think With Logix™

5 - 19

**LOGIX®**  
 INSULATED CONCRETE FORMS

All drawings are downloadable at [www.logixcf.com](http://www.logixcf.com)

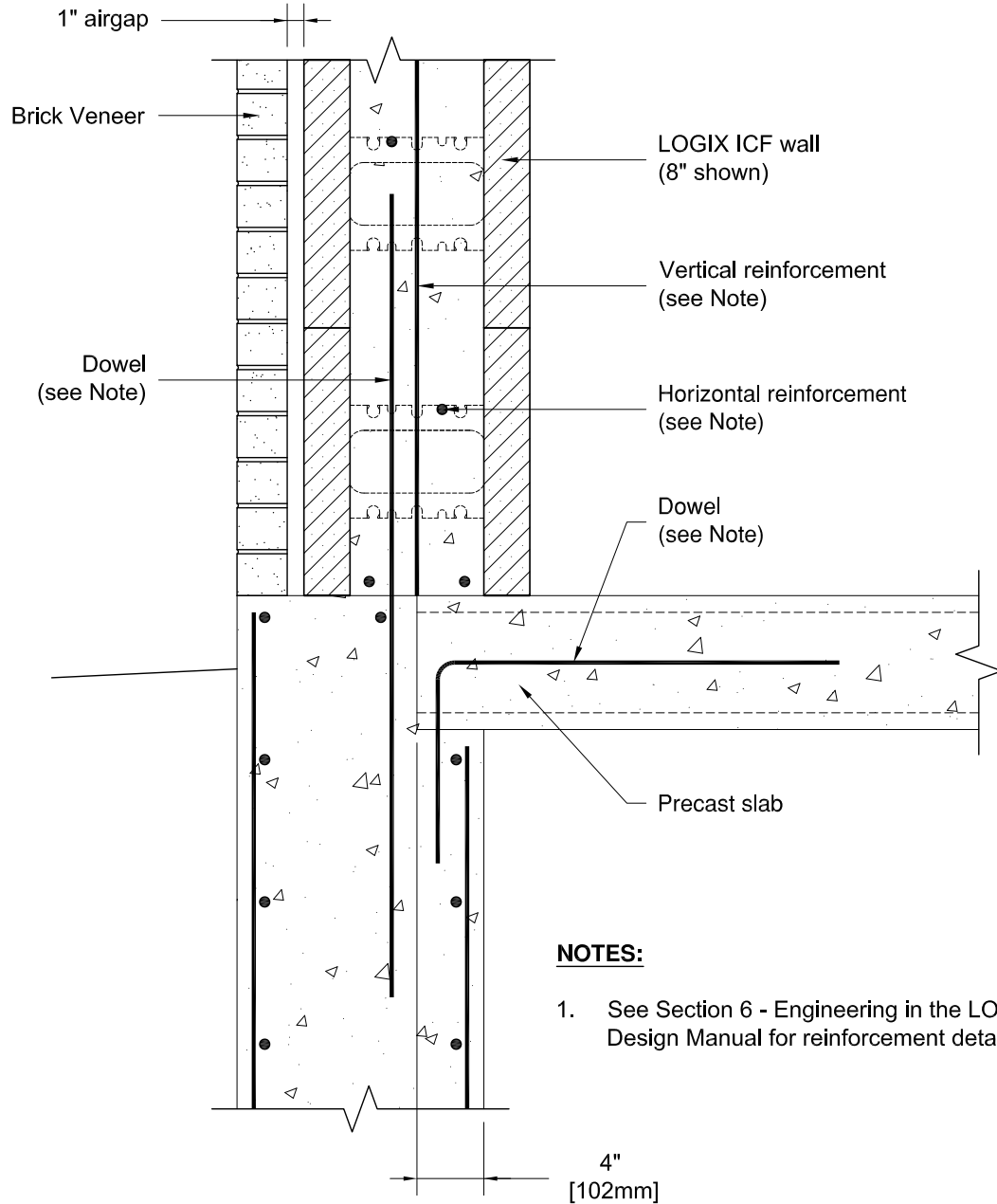
The tables and drawings represented herein are believed to be accurate and conforming to current design and construction practices. However, the tables and drawings should be used as a reference guide only. The user shall check to ensure the drawing meets local building codes, design and construction practices by consulting local building officials and professionals, including any additional requirements. Logix reserves the right to make changes to the tables and drawings without notice and assumes no liability in connection with the use of the tables and drawings including modification, copying or distribution.

[www.logixcf.com](http://www.logixcf.com)

Think With Logix™

5 - 20

**LOGIX®**  
 INSULATED CONCRETE FORMS

All drawings are downloadable at [www.logixicf.com](http://www.logixicf.com)**NOTES:**

1. See Section 6 - Engineering in the LOGIX Design Manual for reinforcement details.

The tables and drawings represented herein are believed to be accurate and conforming to current design and construction practices. However, the tables and drawings should be used as a reference guide only. The user shall check to ensure the drawing meets local building codes, design and construction practices by consulting local building officials and professionals, including any additional requirements. Logix reserves the right to make changes to the tables and drawings without notice and assumes no liability in connection with the use of the tables and drawings including modification, copying or distribution.

[www.logixicf.com](http://www.logixicf.com)

Think With Logix™

5-21

**LOGIX®**  
 INSULATED CONCRETE FORMS

Reprinted 2014

Rev. Dec 23/13

C A D D R A W I N G S

